

L83X-
A.11.14

To: Official After Sales Network
Subject: Kombi s.w. update.
Date: 01st/08/2014
Pages: 15



Subject

Kombi s.w. update.

Model

All Lamborghini Aventador Coupé and Roadster MY 14 starting from VIN ELA02757.

Warning: some vehicles included in this VIN range may not be involved, so check carefully on the Lamborghini WEB Portal (at the section named VIN Info) if the cars in your workshop or in your dealer stock are involved before performing any other operation.

Information to the field

As a result of continuous product monitoring, Automobili Lamborghini Spa has introduced a new software that manages instrument cluster to enhance the display graphics.

Field solution

Update software that manage instrument cluster.

Warranty Claim data

The warranty reimbursement request for this rework action will be managed by the following standard Warranty Claim procedures.

Campaign Code: L83X-A.11.14
Campaign Des.: Kombi s.w. update.
Cost code: 50
Component code: CCA1114
Trouble code: 220
Labor code: CC1114100
Labor Time: 2 h

Remember to fill all data in the section “Service and Recall Campaign” in the Warranty booklet of the vehicle as shown below.

Workshop instructions



The instructions contained in this bulletin are based on ODIS Service diagnosis software updated to release 2.1.1 and database Lamborghini 19.60 (see information bulletin BI.07.14)

Preliminary operations:

- 1. Make sure to be recently synchronized with Mirrorserver by checking the Last Sync date under:

<http://mirrorserver/welcome>

or under:

http://IP_address/welcome

if you didn't yet set up the mirrorserver IP alias



IMPORTANT

Make sure the last synchronization has been done after the 02nd may 2014.

Rev.01

The information and procedures published below are strictly confidential and intended exclusively for authorized operators and individuals. All copyrights are the property of Automobili Lamborghini S.p.A based on copyright law. The company reserves the right to make updates and modifications. The reprinting, reproduction, forwarding to unauthorized people and/or to third parties and partial or entire translation thereof are prohibited without written authorization from Automobili Lamborghini S.p.A.

doc. nr: L/V6_M06 Rev.[02]

1/15



Congratulations

You have successfully installed your MirrorServer/2 NOS-Box.

Testing the connection to the configured Provider Server. Please wait a moment, this takes s

Configuration	
Base path	/var/www/desert
Provider URL	https://altair.mirrorserver2.net/deployment
Repository URL	https://altair.mirrorserver2.net/storage
Feedback URL	https://altair.mirrorserver2.net/health
Proxy	http://svc_blackbox? @10.197.179.43:8080
Key file	/var/www/desert/certs/userkey.pem
Certificate	/var/www/desert/certs/usercert.pem
Tests	
Provider WebDAV access	OK (/deployment/)
Repository WebDAV access	OK (/storage/)
Feedback WebDAV access	OK (/health/)
Successful package downloads	5
Failed package downloads	0
Last Sync	14-05-14 at 22:27:56



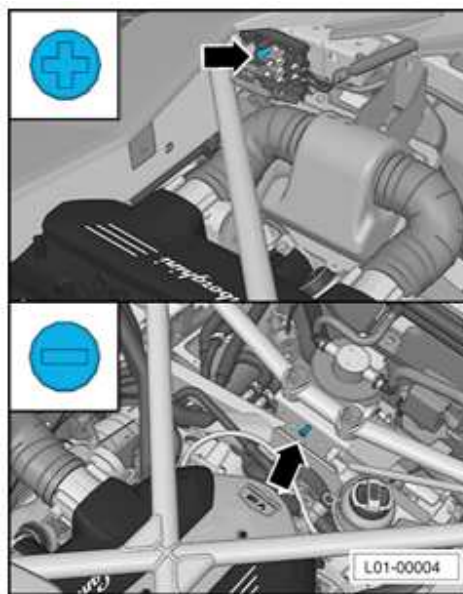
Before starting the Kombi software installation procedure, it is necessary to take note of the current service interval status from the specific menu on the instrument cluster.



In this example it is 3400 km and 200 days.

Update procedure:

2. Please connect a battery charger to the recharge points available in the engine bonnet, as shown in picture.



3. Please connect the VAS5054 interface to the vehicle's OBD plug and to the diagnostic laptop.

Turn the ignition ON

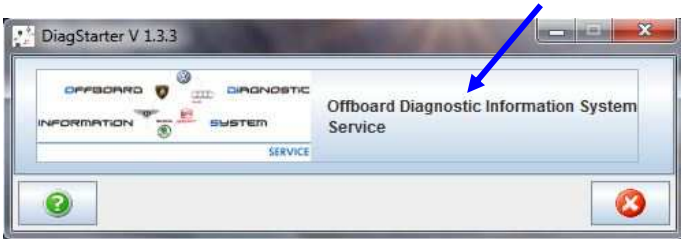




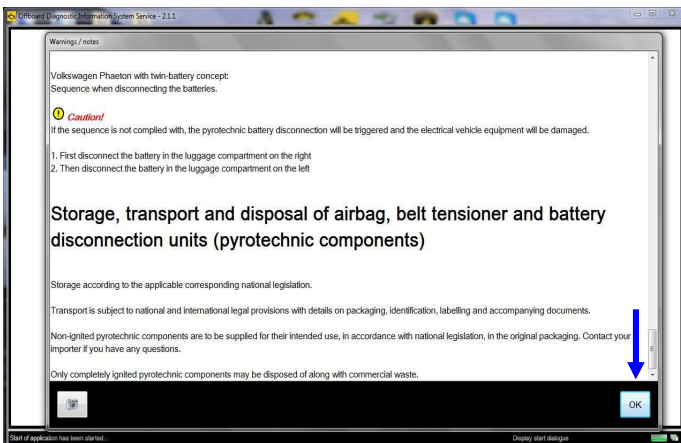
4. Start the ODIS Service double clicking on the related icon on the desktop of the diagnosis laptop.



5. Select Offboard Diagnostic Information System Service clicking on it.



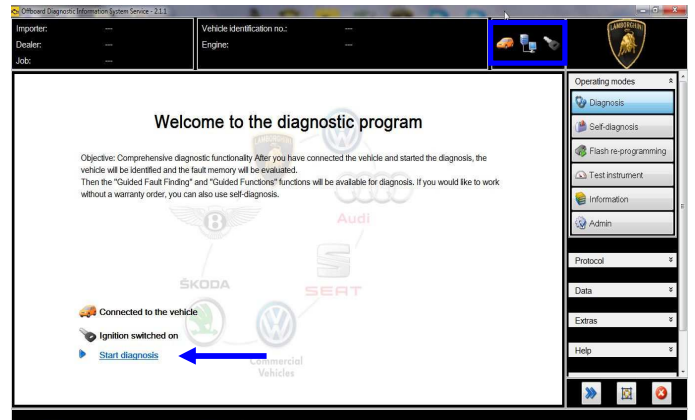
6. Scroll down the right side vertical bar. Click on "OK" to hide the general information window.



7. Select "Start diagnosis".



Make sure that ODIS can detect the vehicle connection status and the key ON.

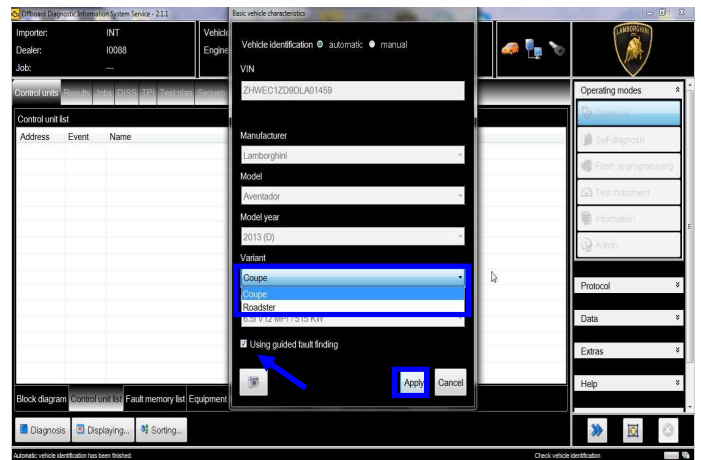


8. Check the vehicle identification on the window "Basic vehicle characteristics".

Select the Variant in the related menu

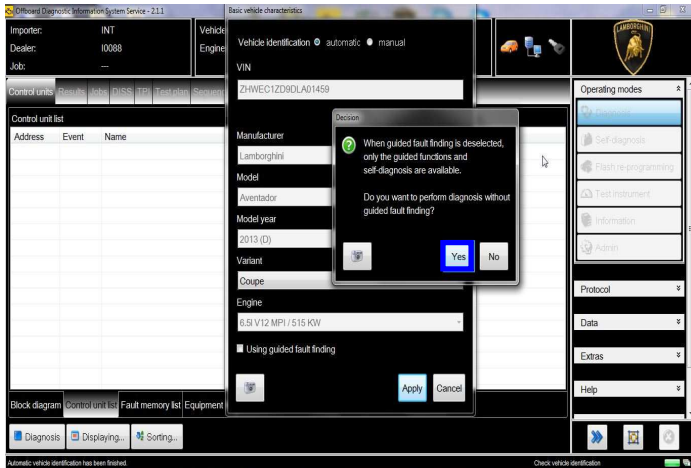
Deselect the checkbox "Using guided fault finding"

Click "Apply"

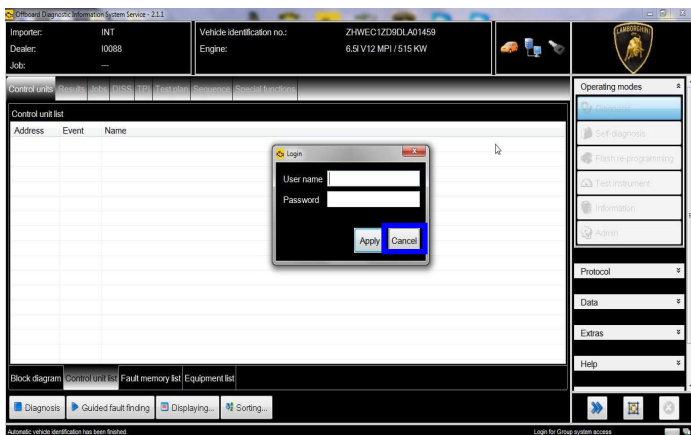




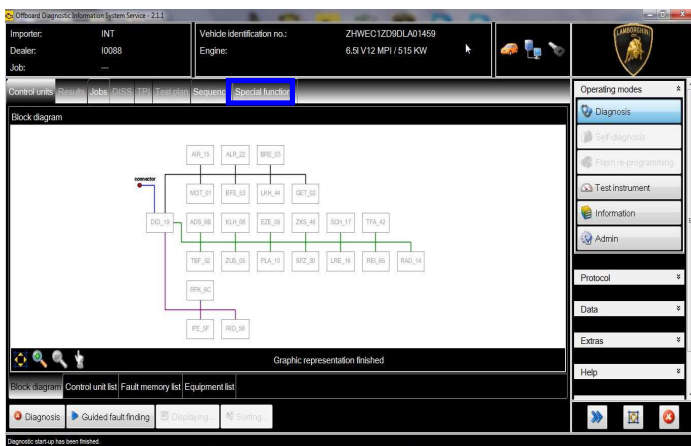
9. Click “Yes”



10. Skip the Login window by clicking “Cancel”

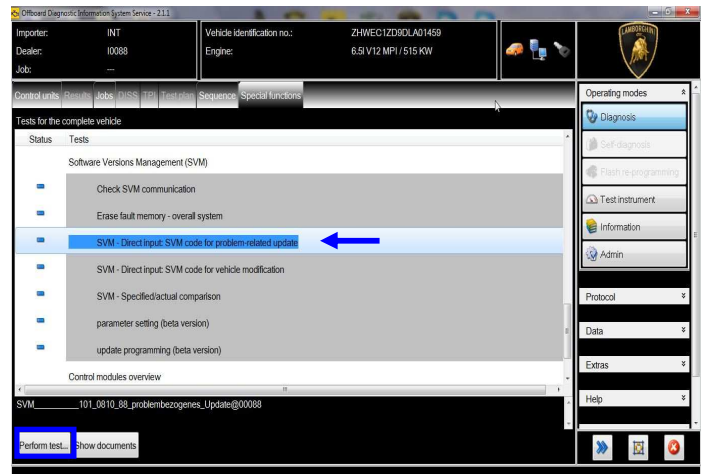


11. At the end of start-up procedure (see status in the progress bar bottom right), move on the ODIS tab “Special functions” now available.



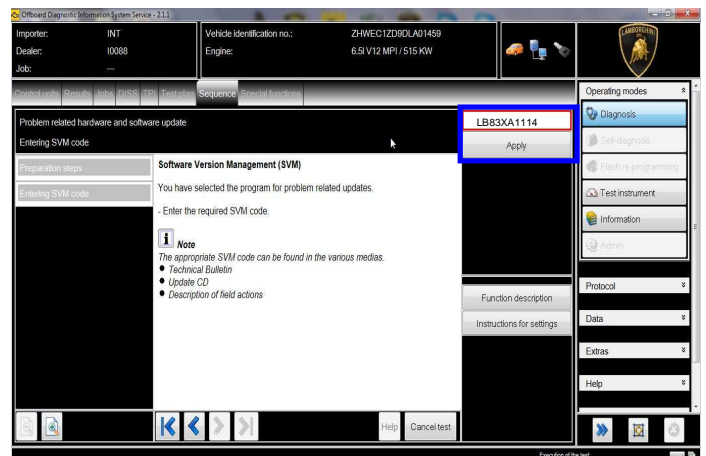
12. Select “SVM – Direct input: SVM code for problem related update” by clicking the related row with the mouse.

Click “Perform test...” to execute the SVM function



13. Insert in the upper box with the cursor the code L83XA1114

Click “Apply”



L83X-
A.11.14

To: Official After Sales Network
Subject: Kombi s.w. update.
Date: 01st/08/2014
Pages: 15



14. Confirm that the inserted code is correct clicking on “Yes”.

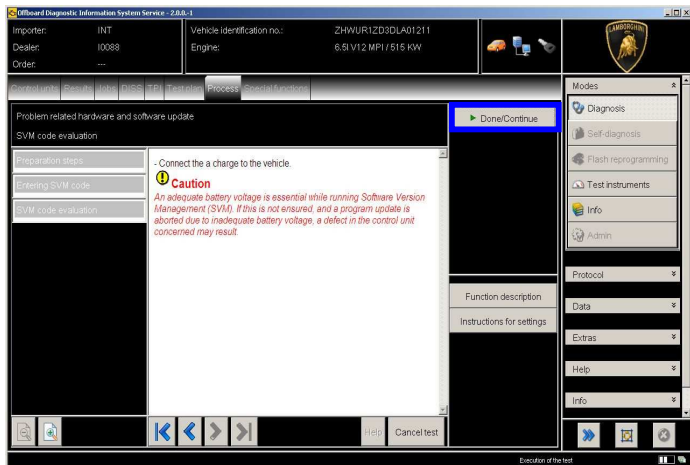


15. Click on “Done/Continue” to start the data acquisition from all the vehicle’s ECUs.

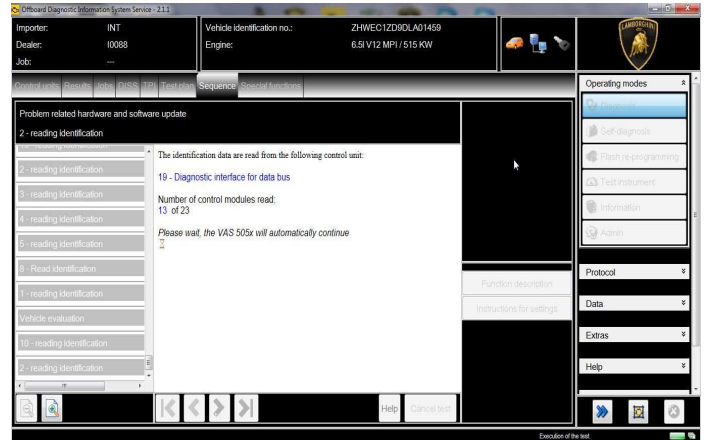


IMPORTANT

Connect always a battery charger during the SVM function



16. Wait until the data acquisition from all control modules is completed.



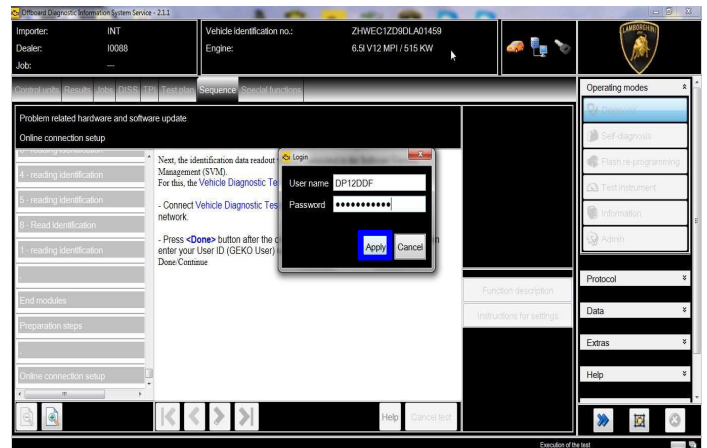
17. For the online authentication a valid GeKo account is necessary.

Be sure that your internet connection is working properly.

Click on “Done/Continue” to access the Login window.

Insert your GeKo user name in the field “Login” and the pin 1324 + current 6 digit code displayed on your GeKo token in the field Password.

Then confirm clicking on “Apply”.



18. The communication is then established with the central server.

At the end of communication you receive following feedback:

“-software to be update has been detected (on 1 control unit).”

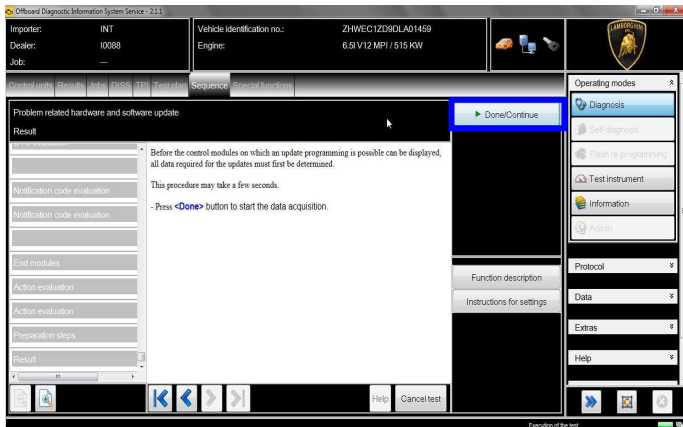


Click “Done/Continue”.



19. All the data to be updated on all the interested control units have to be determined.

Click “Done/Continue”.

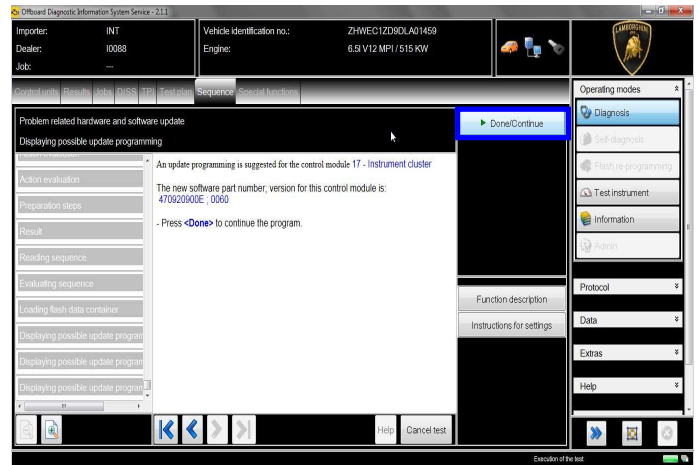


20. Instrument cluster Software Update.

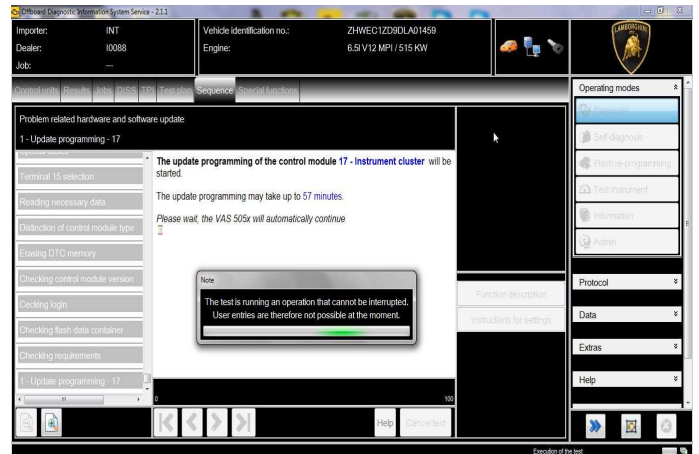
The example in the figure below refer to software part number and version of the Instrument Cluster (Kombi) Software.

470920900E; 0062

Click “Done/Continue” to continue.



21. Wait until the update programming of the Instrument Cluster (Kombi) ECU is completed.



22. Once the update programming has been completed successfully a feedback as in the picture below is displayed.

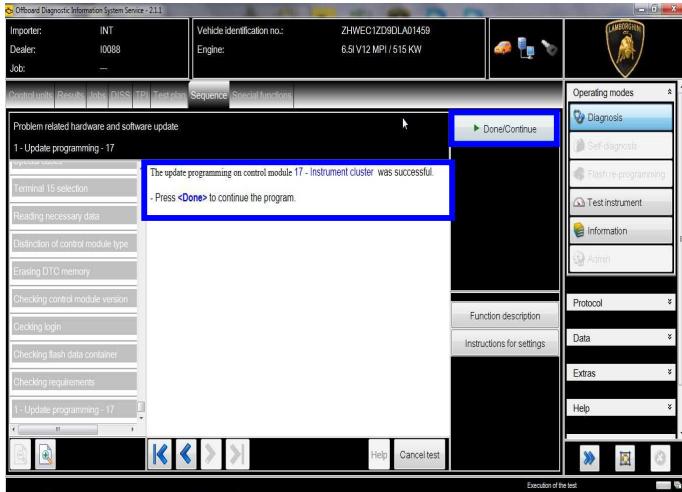
Click “Done/Continue”.

If the update programming has not been completed or has been unsuccessful:

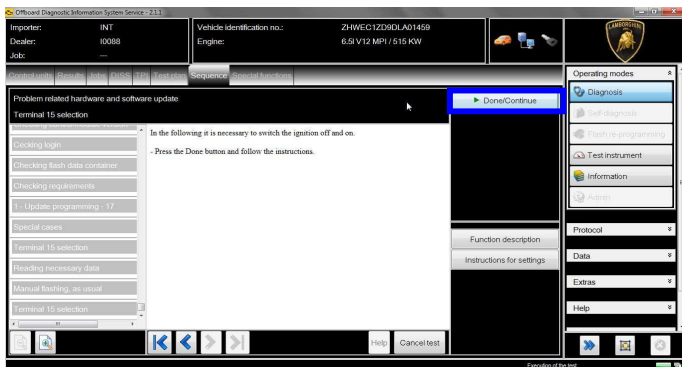
- turn the ignition OFF;
- wait 1 minute before turning the ignition ON again;
- if offered by the program: select “Repeat” to retry the update programming, otherwise repeat the procedure from step 11.

L83X-
A.11.14

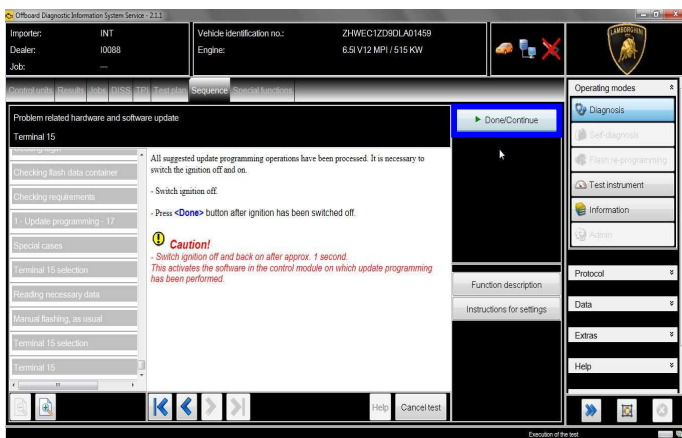
To: **Official After Sales Network**
Subject: **Kombi s.w. update.**
Date: **01st/08/2014**
Pages: **15**



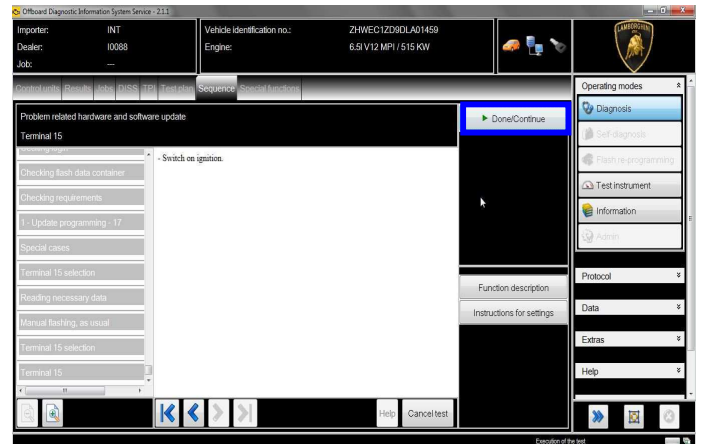
23. In the following an ignition OFF – ON cycle is necessary to restart both the ECU.
Press “Done/Continue” to continue.



24. Switch the ignition OFF.
Press “Done/Continue”.

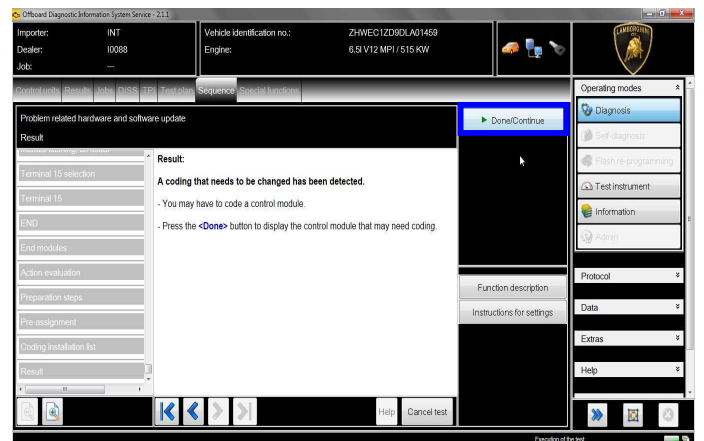


25. Switch the ignition ON.
Press “Done/Continue”.



26. New coding has been detected.

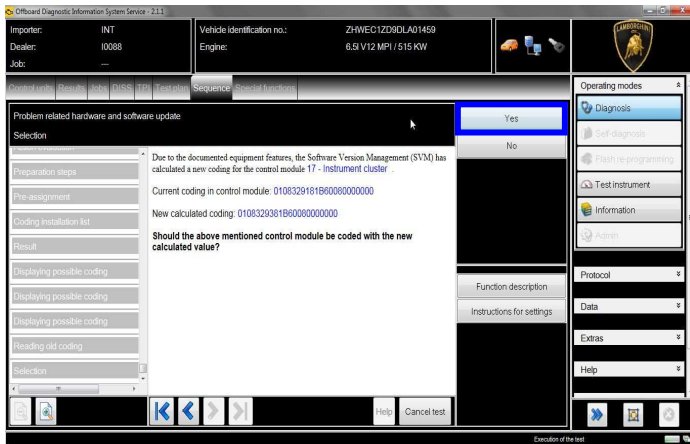
Click “Done/Continue” to continue with the coding.



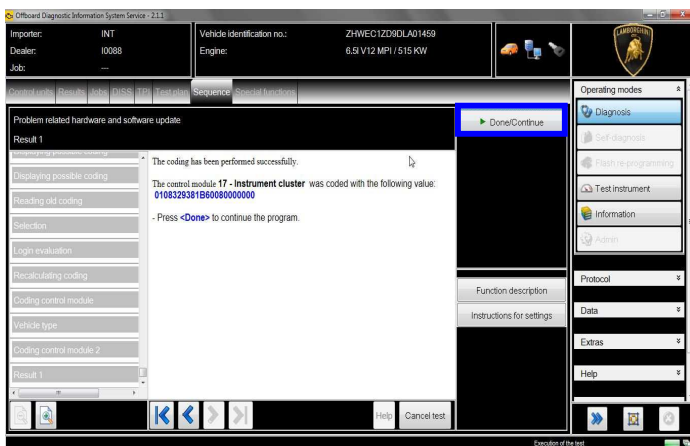
27. New coding has been calculated on control unit 17 – Instrument Cluster and it is necessary to write in the ECU.
Click “Yes”.

L83X-
A.11.14

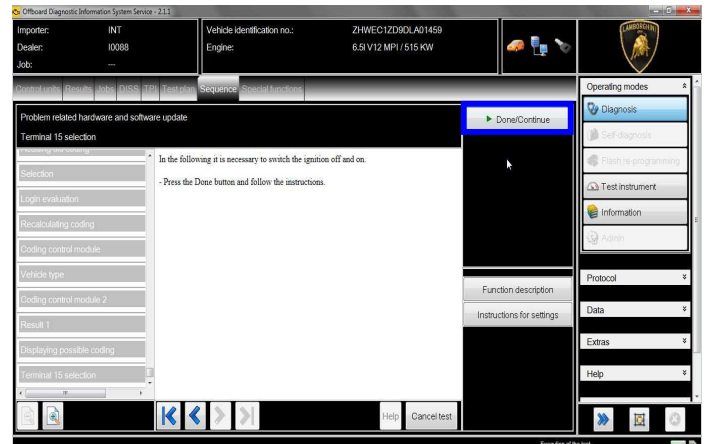
To: **Official After Sales Network**
Subject: **Kombi s.w. update.**
Date: **01st/08/2014**
Pages: **15**



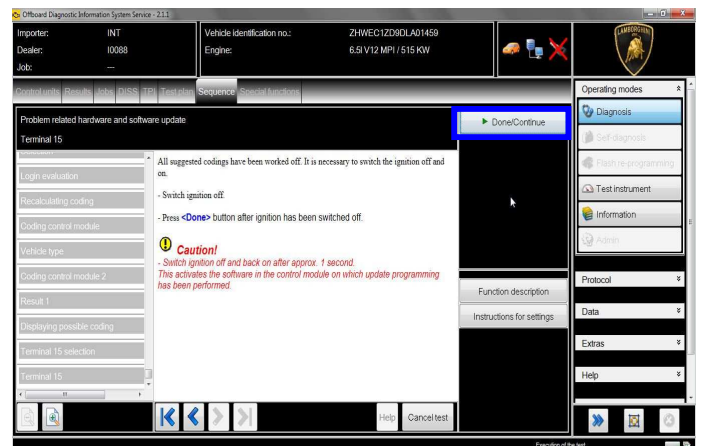
28. At the end of the coding update a feedback is displayed as indicated in the below figure.
Click “Done/Continue”.



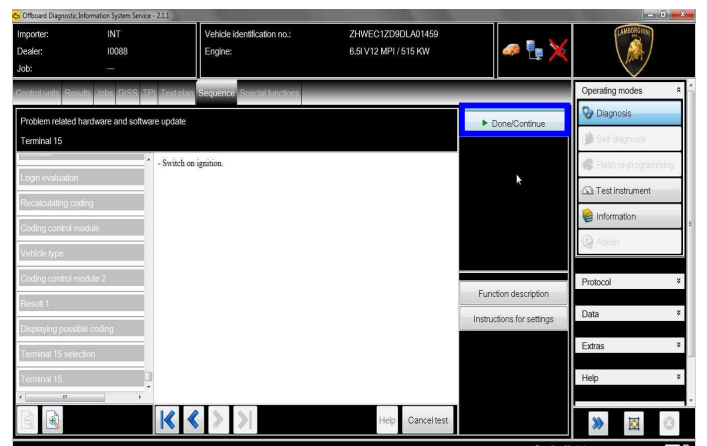
29. In the following an ignition OFF – ON cycle is necessary to restart both the ECUs.
Press “Done/Continue” to continue.



30. Switch the ignition OFF.
Press “Done/Continue”.



31. Switch the ignition ON.
Press “Done/Continue”.



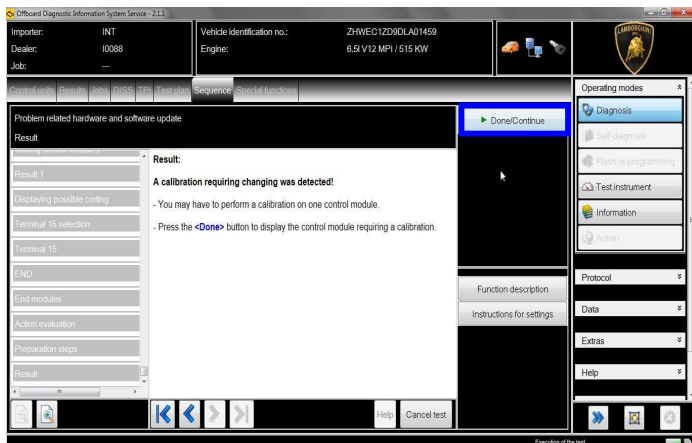
L83X-
A.11.14

To: Official After Sales Network
Subject: Kombi s.w. update.
Date: 01st/08/2014
Pages: 15

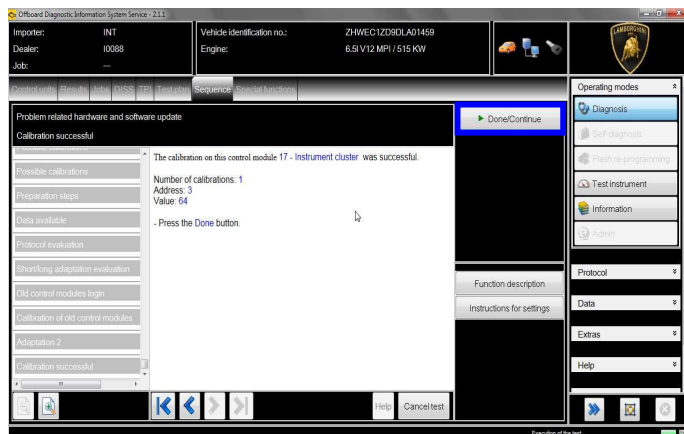


32. A calibration has been detected.

Click “Done/Continue”.

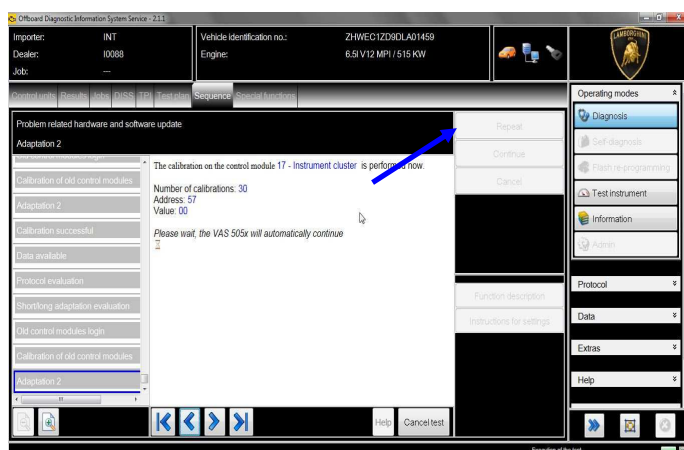
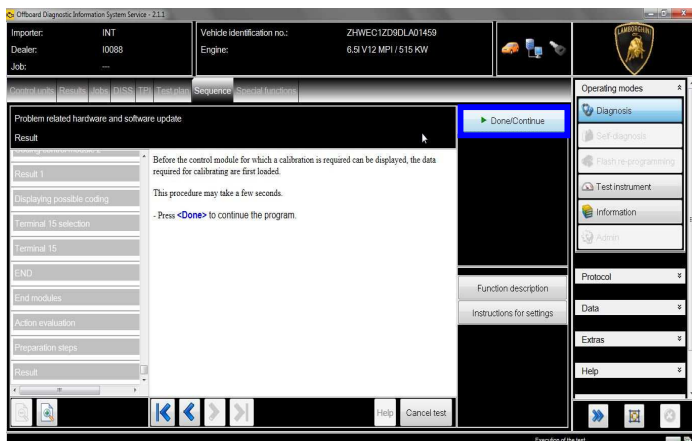


- if offered by the program: select “Repeat” to re-try the update programming, otherwise repeat the procedure from step 32.



33. Wait few seconds in order to allow the download of all calibration data.

Click “Done/Continue”.



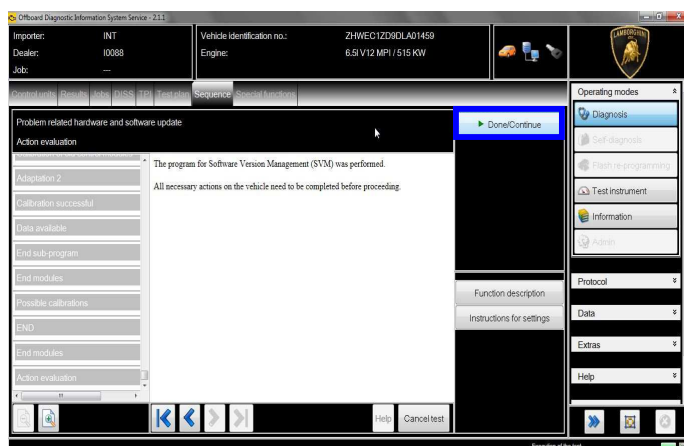
34. Continue with the calibration of the control unit 17 – Instrument Cluster.

Click “Done/Continue” to continue with the calibration of each parameter.

If the calibration update has not been completed or has been unsuccessful:

- turn the ignition OFF;
- wait 1 minute before turning the ignition ON again;

35. Click “Done/Continue” to end the SVM function.



Rev.01

The information and procedures published below are strictly confidential and intended exclusively for authorized operators and individuals. All copyrights are the property of Automobili Lamborghini S.p.A based on copyright law. The company reserves the right to make updates and modifications. The reprinting, reproduction, forwarding to unauthorized people and/or to third parties and partial or entire translation thereof are prohibited without written authorization from Automobili Lamborghini S.p.A.

9/15

doc. nr: L/V6_M06 Rev.[02]

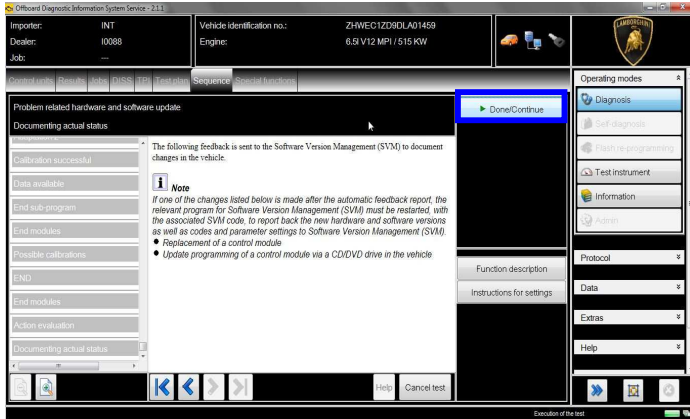
L83X-
A.11.14

To: Official After Sales Network
Subject: Kombi s.w. update.
Date: 01st/08/2014
Pages 15

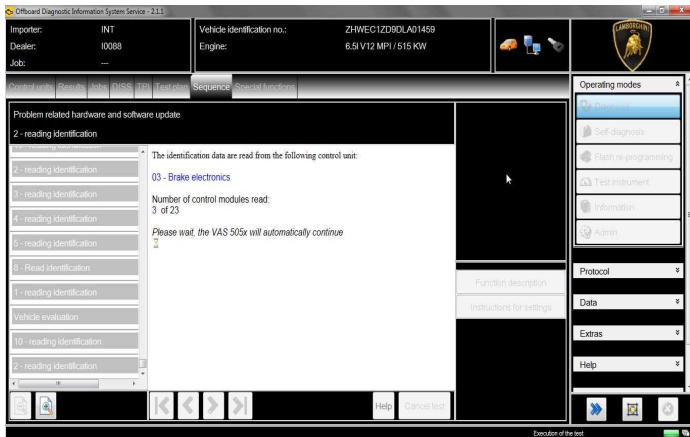


36. SVM can be completed after data acquisition from all ECUs.

Click “Done/Continue”.



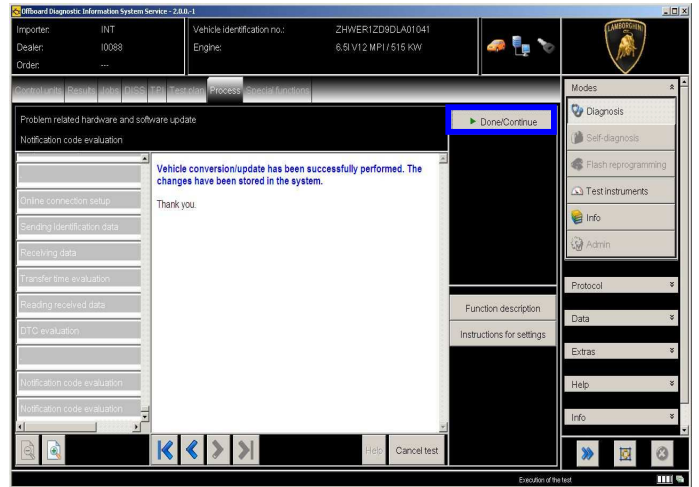
37. Wait until the data acquisition from all the control modules is completed.



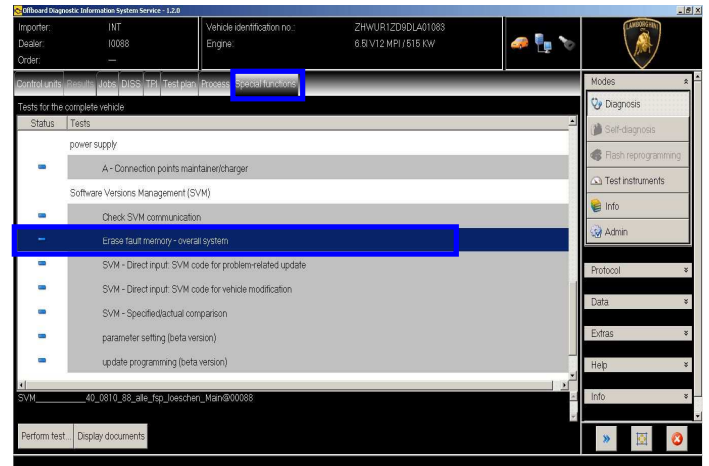
38. Once the data report has been sent to the servers a feedback as in the picture below is displayed.

The software update of engine, gearbox and instrument cluster ECUs has been completed successfully and all the information have been stored in the system.

Press “Done/Continue” to exit the program.



39. Go back to the tab “Special functions” and select “Erase fault memory – overall system” to clear all the faults stored because of the recent software update.



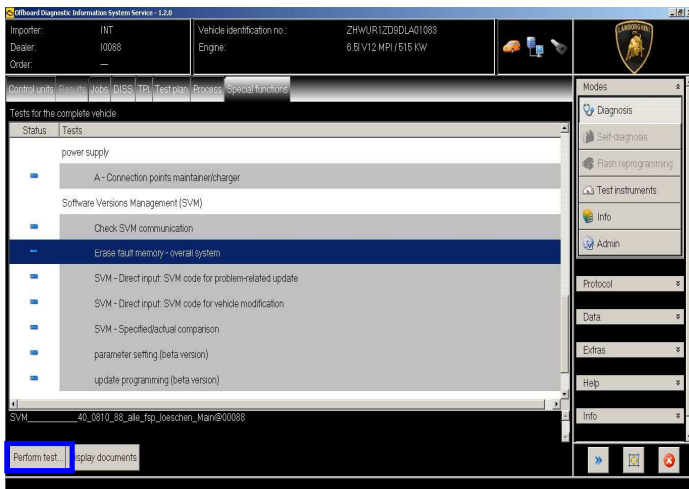
40. Execute the program “Erase fault memory – overall system” clicking on “Perform test...”

Rev.01

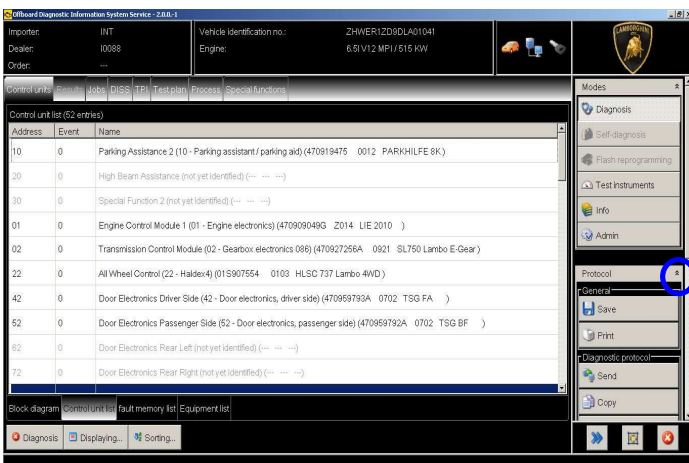
The information and procedures published below are strictly confidential and intended exclusively for authorized operators and individuals. All copyrights are the property of Automobili Lamborghini S.p.A based on copyright law. The company reserves the right to make updates and modifications. The reprinting, reproduction, forwarding to unauthorized people and/or to third parties and partial or entire translation thereof are prohibited without written authorization from Automobili Lamborghini S.p.A.

10/15

doc. nr: L/V6_M06 Rev.[02]



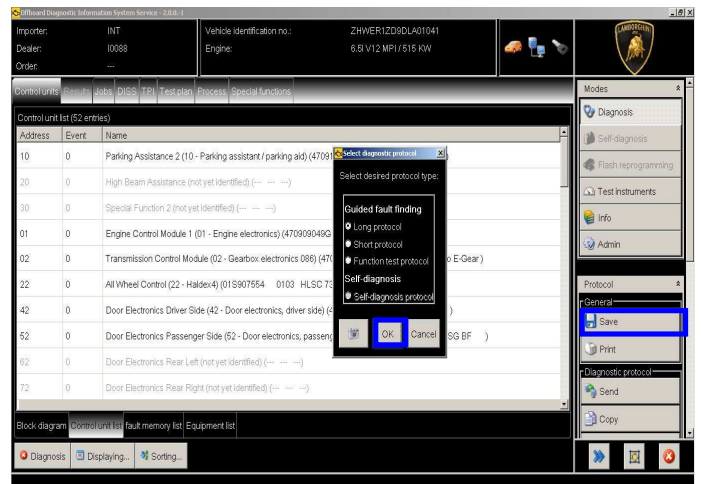
41. . At the end of previous steps, expand the menu 'Protocol' on the right side (menu bar).



42. Click "Save" in the subgroup of buttons "General" In the diagnosis protocol window under GFF select:

- Long protocol.

By clicking on it. Then click "OK".



43. Select the position where you want to save the diagnosis protocol on your diagnosis laptop.

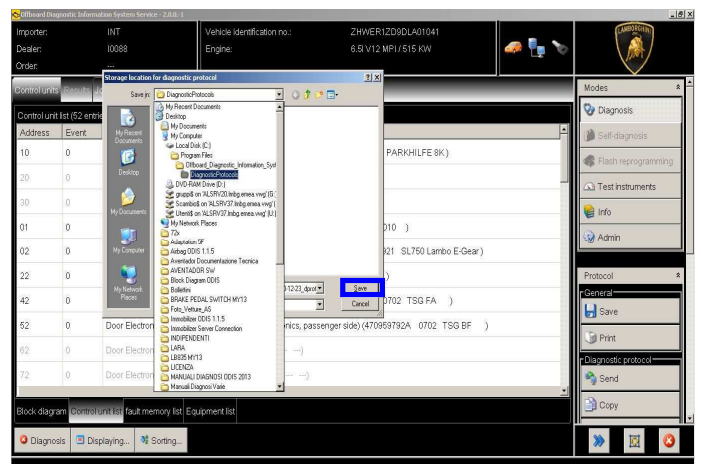
(default path can be changed under Admin and is set under ODIS Service installation folder).

Diagnosis protocol format is internet (.html).

Click "Save" to save the protocol.



Click "Print" in the subgroup of buttons "General" to print the protocol directly on a pdf file (if available Adobe pdf) or in paper format by sending to an installed network printer



44. The diagnosis protocol has to be attached to the related Warranty Claim



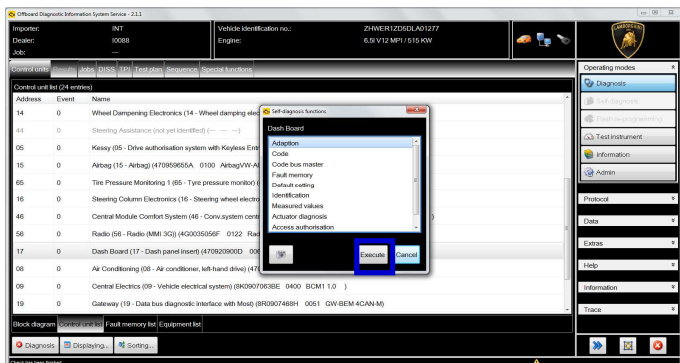
(in order to insert the claim on the Web Portal, please refer to Warranty Claim Manual you can find under the Portal, Warranty section.

45. Restore the previously Service Intervals with following procedure:

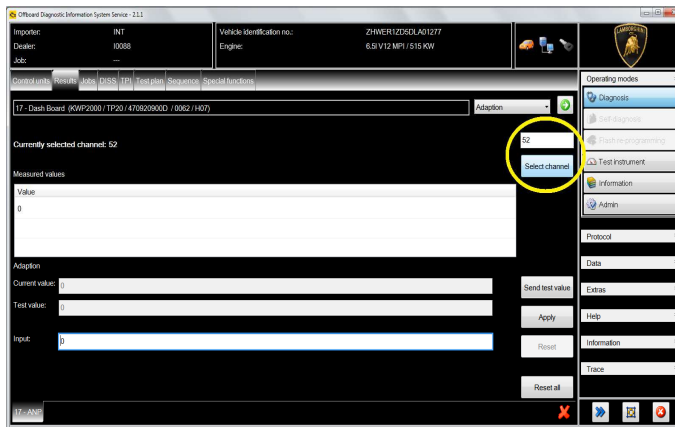
- 1) Remain in Odis Service for diagnosis
- 2) From Control Units list, select “17 – Dashboard” and right click with the mouse
- 3) Select “Control unit self diagnosis”



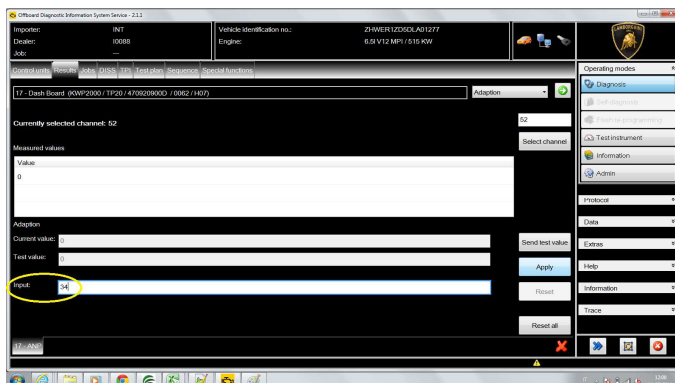
46. Select “Adaption” and click “Execute”:



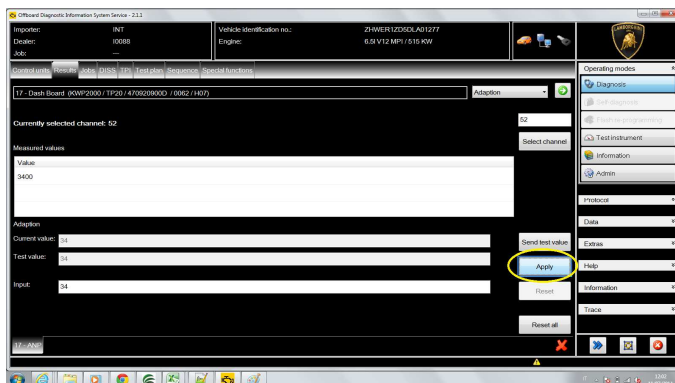
47. Type “52” in the upper right text box and click “Select Channel” button.



48. Insert the kilometers to the next service divided by 100 in the “Input” box (e.g if before the driveability package installation the remaining interval was 3400km, type “34”, that is 3400/100).

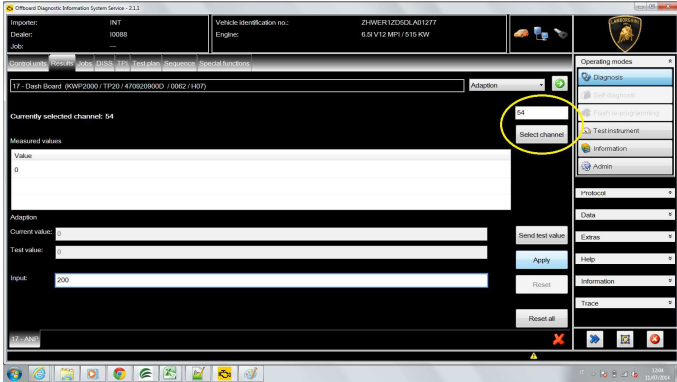


49. Click “Apply”

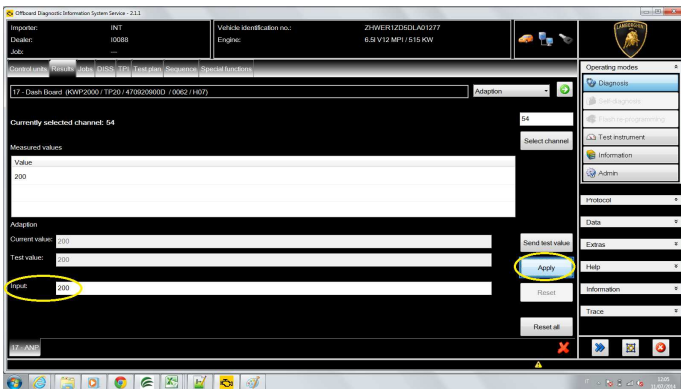




50. Select the channel “54”.



51. Insert the days till the next service in the “Input” box (e.g. 200 = 200 days) and click “Apply” button.

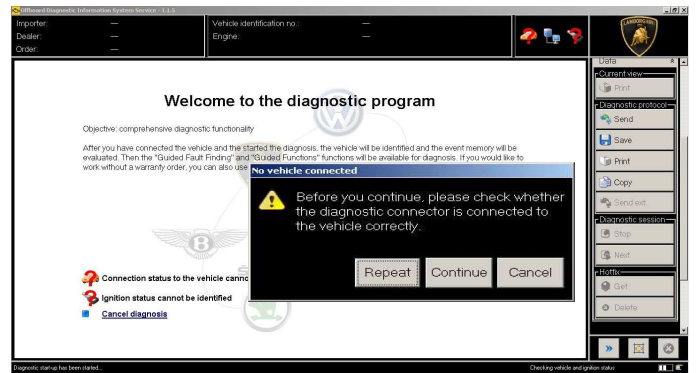


Now, the service interval values are restored as in the example figure of page 2. The diagnosis tool can be closed.

Trouble shooting

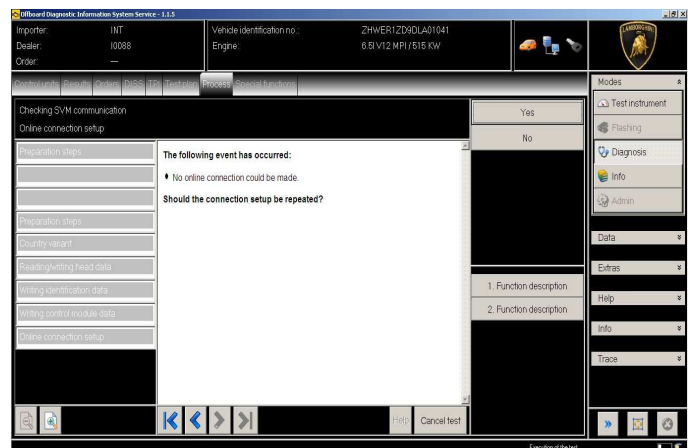
A. If the error message regarding the VAS5054 interface and the 2 icons for status of on board connection and key on are shown as in the picture below:

- Click “Cancel”;
- Repeat the VAS5054 HW interface installation following the procedure (*) “VCI Manager v2.0”, by entering in the menu “Extras” on the right side and clicking on “Diagnostic interface”.



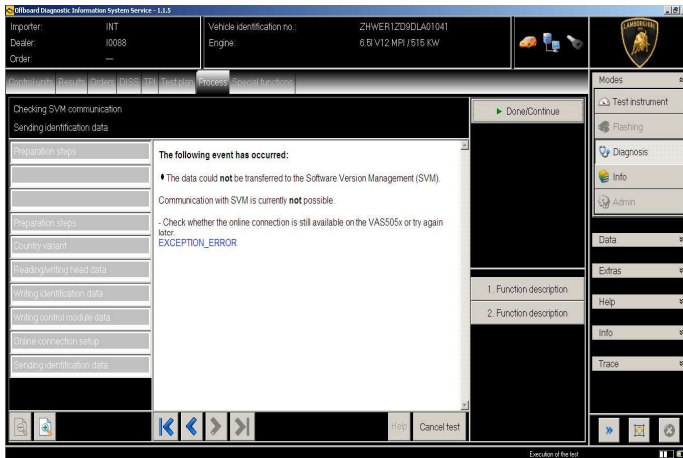
B. If one of the connection errors screens is shown as in the pictures below:

- it is not possible to establish a connection with the central server. Please check carefully that the diagnosis laptop is properly connected to the internet network and retry clicking “Yes” or “Done/Continue”.



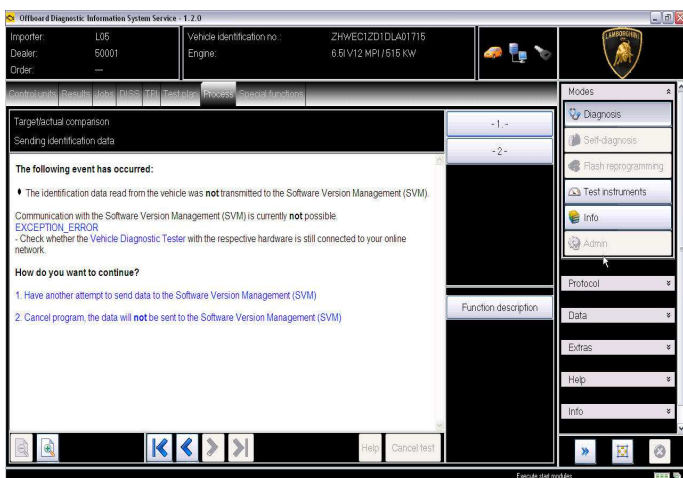
L83X-
A.11.14

To: Official After Sales Network
Subject: Kombi s.w. update.
Date: 01st/08/2014
Pages: 15



C. If the loss of connection happens during the target/actual comparison.

- It is not possible to connect to central server, check the working connection of internet and retry by clicking “1”.



D. If the incorrect identification message is shown as in the picture below (error code: ODS1007E):

- be sure that your Geko account is valid;
- be sure that the label “Geko” is written on the token that you are using for the authentication;
- be sure the Password inserted is correct;
- click on Cancel and perform the application test (see document

“ODIS_Checking_ConnectionServer_SVM_2.0” (*).



E. If the infrastructure error message is shown as in the picture below (error code: ODS9212E):

- be sure that your Geko account is valid
- be sure that the label “Geko” is written on the token that you are using for the authentication
- verify in ODIS settings you have “Internet” instead of “CPN” (see document “ODIS_Initial_Setup_2.0” (*))
- click on Cancel and perform the application test (see document “ODIS_Checking_ConnectionServer_SVM_2.0” (*))



If the same error was present during the application test, try following procedure:

Rev.01

The information and procedures published below are strictly confidential and intended exclusively for authorized operators and individuals. All copyrights are the property of Automobili Lamborghini S.p.A based on copyright law. The company reserves the right to make updates and modifications. The reprinting, reproduction, forwarding to unauthorized people and/or to third parties and partial or entire translation thereof are prohibited without written authorization from Automobili Lamborghini S.p.A.

doc. nr: L/V6_M06 Rev.[02]

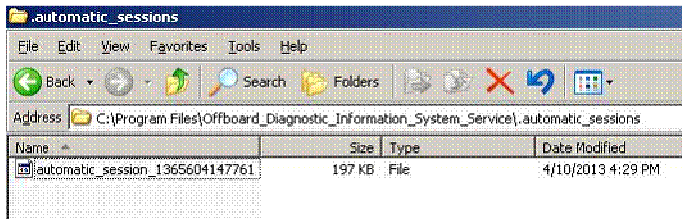
14/15



- quit ODIS;
- Enter the folder C:\Program Files\Offboard_Diagnostic_Information_System_Service\automatic_sessions on your diagnosis laptop;
- delete the only file present in that folder.
- re-Start ODIS Service under following conditions:
 1. Network connection available;
 2. ODIS connection set on “Internet”;
- Retry the application test and the SVM with your GeKO Token.



In the remote case there was still an error, retry the procedure with a second GeKO token, if available.



- F.** In the case the flash container is not detected (see figure):
- Make sure to be recently synchronized with Mirrorserver by checking the last date of Sync under:
<http://mirrorserver/welcome>
 or under
http://IP_address/welcome
 if you don't have previously defined the “mirrorserver” IP address alias.
 - Make sure to be correctly connected with Mirrorserver.

Congratulations

You have successfully installed your MirrorServer/2 NOS-Box.

Testing the connection to the configured Provider Server. Please wait a moment, this takes some time ...

Configuration	
Base path	/var/www/desert
Provider URL	https://altair.mirrorserver2.net/deployment
Repository URL	https://altair.mirrorserver2.net/storage
Feedback URL	https://altair.mirrorserver2.net/health
Proxy	http://svc_blackbox?@10.197.179.43:8080
Key file	/var/www/desert/certs/userkey.pem
Certificate	/var/www/desert/certs/usercert.pem
Tests	
Provider WebDAV access	OK (/deployment/)
Repository WebDAV access	OK (/storage/)
Feedback WebDAV access	OK (/health/)
Successful package downloads	5
Failed package downloads	0
Last Sync	14-05-14 at 22-27-56

NOTE:

(*) ODIS technical documentation can be retrieved on the Lamborghini web portal, under ODIS section → ODIS technical documentation.



IMPORTANT REMARK:

The documents to be mandatory attached to the claim are:

- Job order done;
- Diagnosis Protocol saved.

Failure to follow the procedures may lead to the rejection of the request.

Your Area Manager is at full disposal for further information.

Best regards

Customer Service